



Solution
Partner

PLM

SIEMENS

Siemens PLM Software's solutions portfolio provides a comprehensive suite of tightly integrated modules that help you seamlessly and securely manage all phases of a product lifecycle that extends from detailed design and engineering to manufacturing, final assembly, and testing.

These solutions include the following for aircraft and airframes:

Verification Management

Achieve faster time to certification with an integrated environment that ensures correct requirements execution, resources planning, and full traceability.

Product Realization

Enable early decision-making and integrate manufacturing considerations across the product lifecycle.

Integrated Program Planning & Execution

Integrate cost, schedule and technical requirements with a fully planned, resourced and budgeted program management solution.

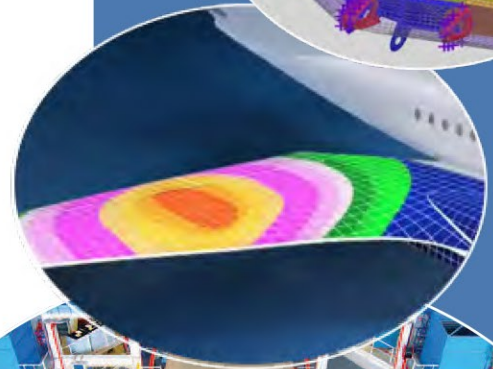
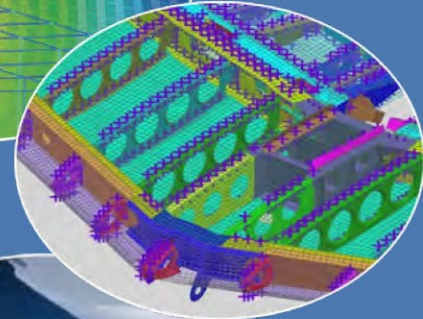
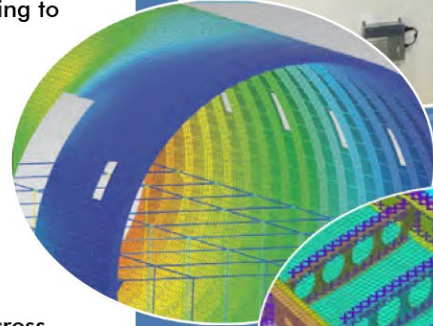
Additive Design & Manufacturing

Our digitalized process eliminates the need to translate and remodel parts between applications and allows you to quickly reimagine products and enable innovation in designs.

Siemens has selected technology company, ESTEQ as the sole supplier of their PLM software in South Africa



Scan the QR code for
more information:



Tel: +27 12 809 9500
Email: info@esteq.co.za
www.esteq.co.za

TECHNOLOGY PROVIDERS & CONSULTING